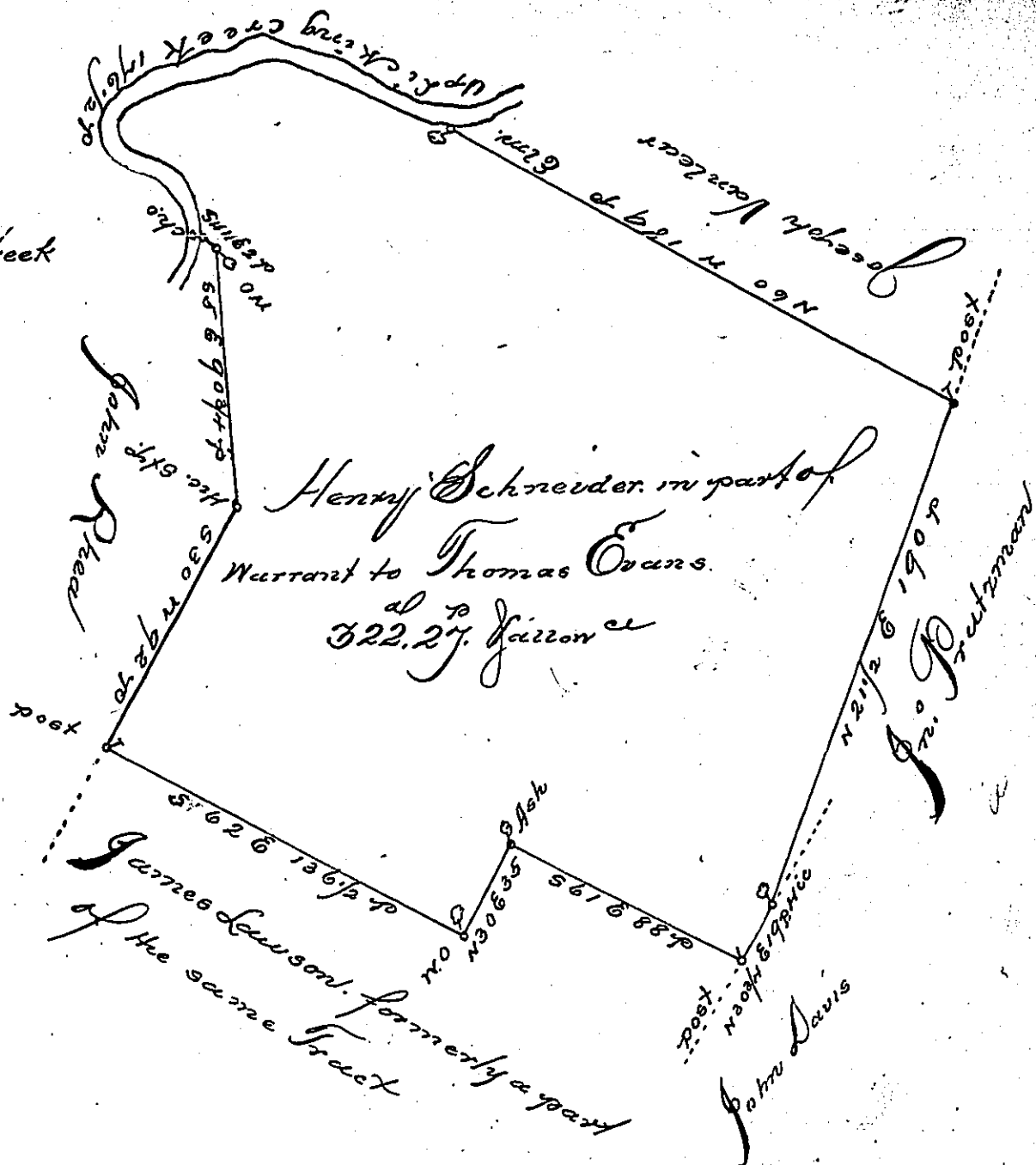


Courses on the Creek

- West 70
- N 60. W. 29
- N 65. W. 22
- N 86. W. 15
- S. 55. W. 16
- S. 85. W. 17
- S. 52. W. 21
- S. 65. E. 23
- S. 17 E. 23 1/2



A Draft of a tract or parcel of land situate in Montgomery Township in the County of Franklin (formerly Rattenuan Township in the County of Lancaster) containing three hundred and twenty two Acres and 27 perches and the allowance of six yd Cent for Roads &c. being part of a Tract of 598 acres of allowance formerly surveyed in pursuance of a Warrant granted to Thomas Evans bearing date the 7th day of August 1740. Surveyed and laid off for Henry Schneider the 21st day of September 1792.

T. Daniel Brodhead Esq
 Surveyor General

Math. Henderson D. J.

IN TESTIMONY that the above is a copy of the original remaining on file in the Department of Internal Affairs of Pennsylvania, made conformably to an Act of Assembly approved the 16th day of February, 1833, I have hereunto set my Hand and caused the Seal of said Department to be affixed at Harrisburg, this seventh day of March 1899

James W. Fatta
 Secretary of Internal Affairs.